

Hub and Spoke Sustainability Planning for What's Next

Gloria Miele, PhD

Learning Collaborative Q8

Regions 4 & 6 - September 9th, 2019

Regions 1 & 2 - September 10th, 2019

Regions 3 & 5 - September 11th, 2019

UCLA Integrated Substance Abuse Programs

California Hub and Spoke Project

The use of affirming language inspires hope and advances recovery.

LANGUAGE MATTERS.

Words have power.



PEOPLE FIRST.



The ATTC Network uses affirming language to promote the promises of recovery by advancing evidence-based and culturally informed practices.



ATTC

Addiction Technology Transfer Center Network
Funded by Substance Abuse and Mental Health Services Administration

Objectives

- ▶ Define sustainability and how it applies to the Hub and Spoke project
- ▶ Review best practices in creating a sustainability plan
- ▶ Share strategies to start planning for sustainability of MAT programs
- ▶ Identify two lessons learned from Hub and Spoke QI measures

What is sustainability?

Programs or services that continue because they are valued and draw support and resources.

Have a sustained impact



Ongoing impact of collaboration

- ▶ New ways of working together
- ▶ New lines of communication
- ▶ New culture of collaboration



Improved service models



- ▶ New practice standards
- ▶ Patient navigation
- ▶ New training initiatives

Increased capacity in local systems

- ▶ New infrastructure
- ▶ New curricula
- ▶ Capital improvements



Changes in knowledge, attitudes, behaviors



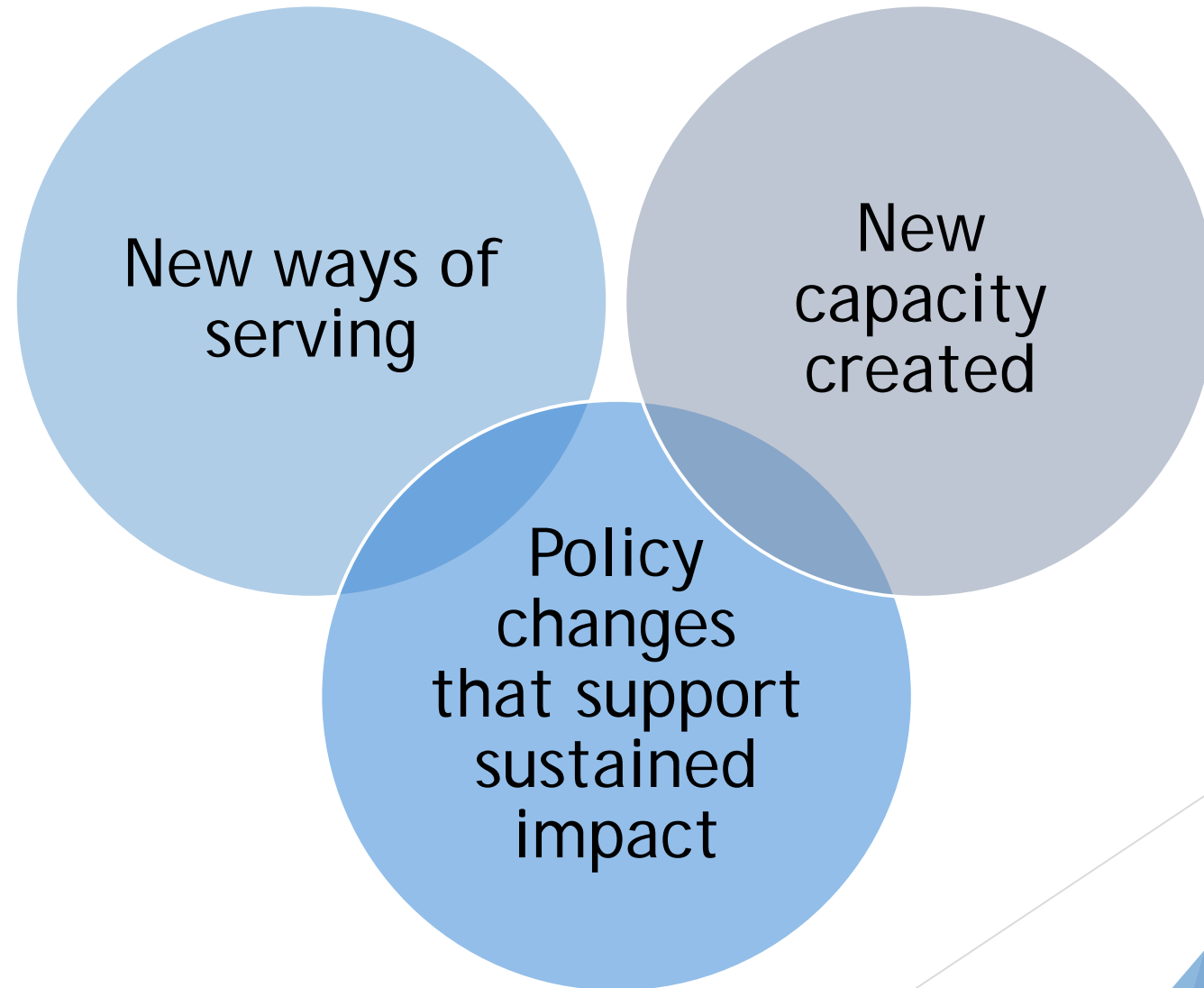
- ▶ Public awareness
- ▶ Attitude change and stigma reduction
- ▶ Interdisciplinary care

New policies to sustain impact

- ▶ Policies and procedures
- ▶ Best practice documents



Sustained impact



New ways of
serving

New
capacity
created

Policy
changes
that support
sustained
impact

Creating Your Plan

- ▶ Accomplishments - what have you achieved?
What impact have you already made?
- ▶ Moving forward - which of these new processes, programs, improvements will you continue?
- ▶ Program Structure
- ▶ Continuation budget
- ▶ Funding strategies



Small Group Discussion



Report Out



- What are your accomplishments in building your MAT program?
- What is critical to sustain your program?
- What funding strategies will you consider?
- What other issues would impact sustainability?

Financial resources



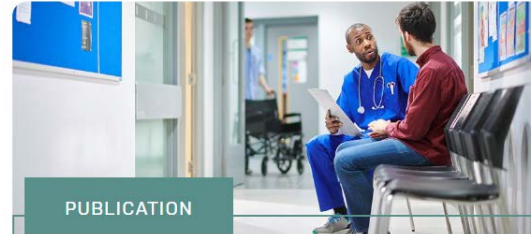
PUBLICATION

How to Pay for It: MAT in the Emergency Department



PUBLICATION

How to Pay for It: Community Health Workers



PUBLICATION

How to Pay for It: MAT in Community Health Centers

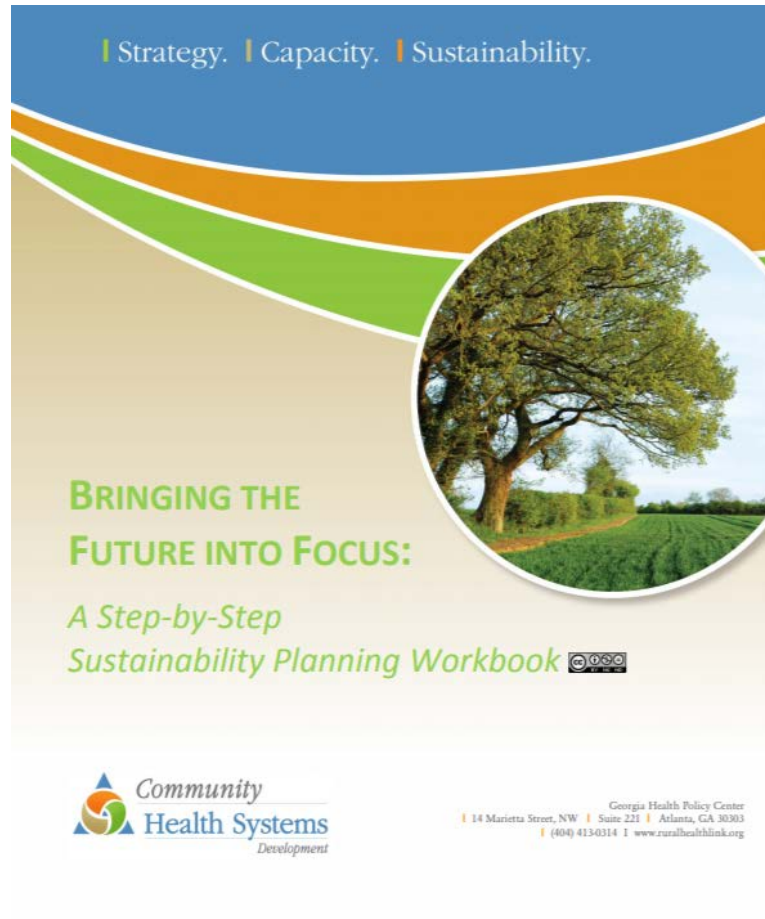


PUBLICATION

How to Pay for It: MAT for Hospitalized Patients

<https://www.chcf.org/collection/how-to-pay-for-it/>

Sustainability Resources



<https://www.ruralhealthinfo.org>

Discussion and Questions



QI Data Review

[Individualized data presented based on attendees at each session.]

Increase Capacity of Waivered Prescribers



**MAT
WAIVERED PRESCRIBER
SUPPORT INITIATIVE**

www.uclaisap.org/MATPrescriberSupport

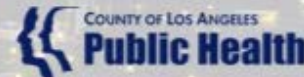
Mentoring, consultation, training and technical assistance for prescribers outside of Hub and Spoke who are not using their waivers

Sixteenth Statewide Conference
**INTEGRATING SUBSTANCE USE,
MENTAL HEALTH, AND
PRIMARY CARE SERVICES:**
ENHANCING FOUNDATIONS FOR CHANGE



Hilton Universal City Hotel at Universal City
555 Universal Hollywood Drive
Universal City, California 91608
October 23-24, 2019

Sponsored by:



In collaboration with:



Pacific Southwest
ATTC
(HHS Region 9)



LOS ANGELES
LGBT
CENTER



SOCIAL MODEL
RECOVERY SYSTEMS

Next Face to Face LC Dates

- ▶ Region 4: Friday, November 15th, 2019 - Sacramento
- ▶ Region 5: Wednesday, November 20th, 2019 - San Diego
- ▶ Regions 1 & 2: Monday, December 2nd, 2019 - Sacramento
- ▶ Region 6: Wednesday, December 4th, 2019 - Santa Cruz
- ▶ Region 3: Tuesday, December 10th, 2019 - Oakland