

Embedding Health Equity in Overdose Prevention

July 24, 2023

Speaker: Veronica Johnson, MPH, CHES©

MAT ECHO™ Staff: Gloria Miele, PhD, Beth Rutkowski, MPH, Thomas E. Freese, PhD, and Cheryl Ho, MD



Indigenous Land Acknowledgement

- We respectfully acknowledge that we live and work in territories where Indigenous nations and Tribal groups are traditional stewards of the land.
- Please join us in supporting efforts to affirm Tribal sovereignty across what is now known as California and in displaying respect, honor and gratitude for all Indigenous people.


Whose land are you on?

Option 1: Text your zip code to 1-855-917-5263

Option 2: Enter your location at <https://native-land.ca>

Option 3: Access Native Land website via QR Code:





What we say and how we say it inspires the hope and belief that recovery is possible for everyone.

Affirming, respectful, and culturally-informed language promotes evidence-based care.

PEOPLE FIRST

Language Matters

in treatment, in conversation, in connection.



Addiction Technology Transfer Center Network
Funded by Substance Abuse and Mental Health Services Administration

National Minority Mental Health Awareness Month

*Better Health Through
Better Understanding*



<https://minorityhealth.hhs.gov/minority-mental-health/>

Disclosures

FACULTY DISCLOSURE

None of the presenters, planners, or others in control of content for this educational activity have relevant financial relationships to disclose with ineligible companies whose primary business is producing, marketing, selling, re-selling, or distributing healthcare products used by or on patients, except:

<i>Cheryl Ho, MD</i>	<i>Stock or Stock options; Johnson & Johnson Pfizer, Roche, Eli Lilly</i>
----------------------	---

All other relevant financial relationships have been mitigated by conducting a peer review of the content used for this session.

Building healthy, equitable communities & creating sustainable impact at scale

healthleadership.org



Strategy



Partnerships



Coalitions



Action



Data

© 2023, Public Health Institute. All rights reserved.



University of California Los Angeles
Integrated Substance Abuse Programs



Saving lives with multi-sector partnerships, strategies, & resources for overdose prevention



PREVENT
new addictions



MANAGE
pain safely



TREAT
addiction



STOP
overdose deaths



Learning Objectives

- ▶ Propose two (2) connections between health equity and overdose prevention.
- ▶ Describe three (3) ways the NOPN Health Equity Tool can help support your local work in the future.
- ▶ Apply the NOPN Health Equity Tool to analyze at least one (1) real-world case study or scenario related to overdose prevention.

How does health equity relate to overdose prevention?



How do we reframe our overdose prevention strategies to work with communities rather than for communities?

NOPN Health Equity Tool



© 2023, Public Health Institute. All rights reserved.



Impact statement

What is the impact statement for your coalition or local overdose prevention work? What are you working to achieve?



Socio-economic, political, and cultural context

Which populations experience the greatest historical and/or current burden? List 3 or more data points (statistics, graphs/charts, maps) demonstrating the context surrounding health disparities in your community.



Rationale

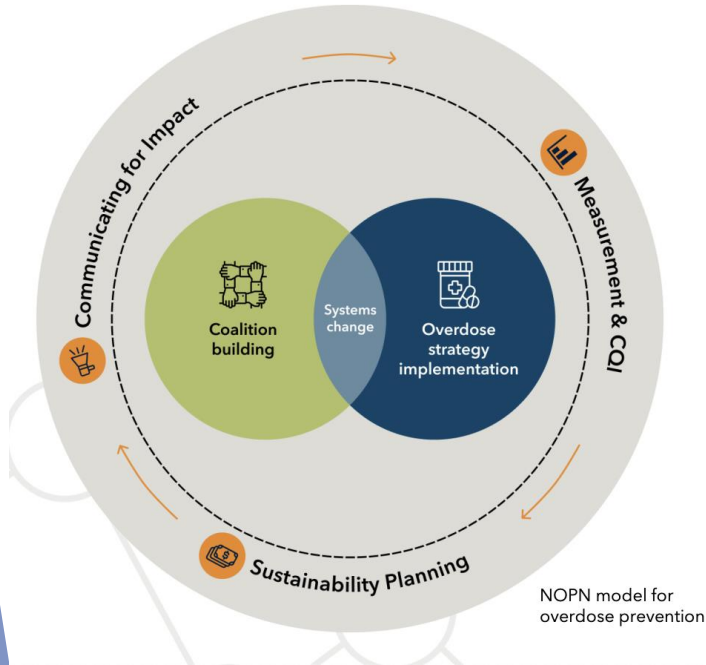
Provide 2-3 bullet points describing the rationale for your coalition to take a health equity lens. Why is it important?



Key Activities

On the next page, complete the sections for each of the following areas of your work:

- **Overdose prevention strategies:** How you implement your overdose prevention strategies and which strategies you choose
- **Coalition building:** How you build and grow your coalition
- **Sustainability:** How you think about sustaining the work of your coalition
- **Communication:** How you approach communications, both internally within your coalition and with community collaborators
- **Data:** How you measure your work, including which data you choose and how you collect it



© 2023, Public Health Institute. All rights reserved.

Community collaborators

List 3 or more new collaborators that your coalition should engage to better address health equity in your work. They could be connected to any of the elements of the NOPN model.

Priority activities

For each NOPN model element, list at least one way that your coalition can prioritize health equity and inclusion. What is most important for your coalition to focus on?

Short-term outcomes and indicators

List at least 3 short-term (3 months) indicators to measure how your coalition can better address health equity in the priority activities above.

Long-term outcomes and indicators

List 3 longer-term (2-3 years) indicators to measure how your coalition can help improve health equity going forward.

OVERDOSE PREVENTION STRATEGIES	COALITION BUILDING	SUSTAINABILITY	COMMUNICATION	DATA

Case Examples in California



COPN is a project of PHI Center for Health Leadership & Impact.
© 2023, California Department of Health Care Services.



University of California Los Angeles
Integrated Substance Abuse Programs



CASE STUDY

SafeRx Santa Cruz

Santa Cruz is a community all about connection. COVID-19 has caused extreme isolation, leading to more overdose deaths. The team collected demographic data to understand which community members have been the hardest hit by COVID-19 and overdoses. They increased their attention to trauma, stigma, and bias which led them to engage with the criminal justice system. One of their biggest accomplishments during the COPN Accelerator 2.0 Program was facilitating a partnership between their local Harm Reduction Coalition and their county MAT group. Due to this new partnership, low-barrier MAT treatment is now being offered along with syringe services.



”

Thinking about our key learnings specific to involvement with the Accelerator program, it reinforced, again, the need for equity in all things and being able to identify who is still missing.

-Jenna Shankman, Program Manager



CASE STUDY

Drug Safe Solano

Throughout the COPN Accelerator 2.0 Program, Solano kept coming back to one thing: equity. They chose to focus on being more inclusive by engaging with the community through providing services and gaining partners, building trust and stronger relationships, and adopting Trauma-Informed Care practices and policies. They included new partners in their coalition such as people impacted by substance use disorder as well as Project Roomkey, an organization that works with the homeless population, to further their commitment to equity.



”

Health equity is not just health equity, it's also social justice, it's also social equity, so we try to adopt a more holistic approach to that.

-Arthur Camargo, DSS Coordinator

COPN is a project of PHI Center for Health Leadership & Impact.
© 2023, California Department of Health Care Services.



University of California Los Angeles
Integrated Substance Abuse Programs

Questions?

Veronica Johnson, MPH, CHES

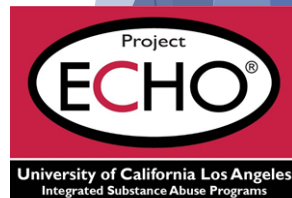
Program Coordinator

PHI Center for Health Leadership and Impact

vjohnson@healthleadership.org



COPN is a project of PHI Center for Health Leadership & Impact.
© 2023, California Department of Health Care Services.





Thank you!
Let us know how we can
support your overdose
prevention efforts.

Contact us at
[**copn@healthleadership.org**](mailto:copn@healthleadership.org)

For more resources and to sign up
for our newsletter visit [**copn.org**](https://copn.org)

COPN is a project of PHI Center for Health Leadership & Impact.
© 2023, California Department of Health Care Services.



University of California Los Angeles
Integrated Substance Abuse Programs

On-Demand Course Catalog

Our Full Course Catalog includes training on a variety of topics. *Courses that offer CE/CME are noted.*

SCAN FOR THE FULL COURSE CATALOG

