

ISAP Training Update

CADPAAC Quarterly Meeting, January 2010

UCLA Integrated Substance Abuse Programs (ISAP)

Walter Ling, MD, Director
Richard A. Rawson, PhD, Associate Director

Pacific Southwest Addiction Technology Transfer Center (ATTC)

Thomas E. Freese, PhD, Principal Investigator
(see pages 2-3)

Evaluation Services to Enhance the Data Management System in California (EnCAL)

Richard A. Rawson, PhD, Principal Investigator
(see pages 4-5)

The ISAP Training Update provides a quarterly summary of training, workforce development, and technical assistance activities that are being planned for the addiction workforce in California. Trainings are sponsored by the Pacific Southwest Addiction Technology Transfer Center (ATTC), and the Evaluation Services to Enhance the Data Management System in California (EnCAL). The training initiatives are designed to increase county administrators' and providers' knowledge of science-based practices and skills in delivering these practices. They also increase abilities to track and record the services provided, and proficiency in using data to understand, evaluate, and improve the quality services. Through these training and technical assistance activities our goal is to ensure a well educated addiction workforce working in the context of a recovery oriented system of care.



Pacific Southwest ATTC Activities

Spring 2010 California Addiction Training and Education Series: PTSD and Substance Abuse – Understanding the Challenges Experienced by Returning Military Members and Their Families

Dates and Locations: February 17, 2010 (Downey, CA); February 19, 2010 (Santa Ana, CA); April 27, 2010 (Yuba City, CA); and April 29, 2010 (San Jose, CA)



Returning military participants will be able to: (1) returning military members; (6) members often describe how the cycle of discuss treatment planning face bio-deployment affects returning considerations for working with psychosocial military members and their families; returning military members and/or challenges that (2) discuss the nature of combat their families; (7) explain the undermine their ability to maintain stressors and their role in the concept of resiliency and its healthy relationships and lead development of mental health possible benefits in the treatment fulfilling lives. Community disorders and substance abuse; (3) of addiction and posttraumatic treatment providers are a key link recognize physical and stress symptomatology; and (8) list when individuals and families begin psychological reactions that may be local, regional, and national to fray under these pressures. This exhibited in response to stress; (4) resources available to assist returning military members, veterans, and their families. For training, the second in the series to describe the assessment more information or to register for focus on veterans issues, will considerations when working with a spring 2010 training session, visit examine specific challenges returning military members and their families; (5) identify the www.psattc.org, and click on the CATES Training Series link. At the end of the daylong training, pharmacological and psychosocial interventions useful for treating

Sponsors: California Department of Alcohol and Drug Programs, UCLA Integrated Substance Abuse Programs, Pacific Southwest Addiction Technology Transfer Center, County Alcohol and Drug Program Administrators' Association of California, California Department of Veterans Affairs, NIDA Clinical Trials Network – Pacific Region Node and CA/AZ Node, County of Los Angeles Department of Public Health, Alcohol and Drug Program Administration, Orange County Health Care Agency, Behavioral Health Services, Sutter/Yuba Mental Health Services, Alcohol and Drug Services, and Santa Clara County Department of Alcohol and Drug Services

Screening, Brief Intervention, and Referral to Treatment (SBIRT) Training Series for Trauma Center, Emergency



Sponsors: UCLA Integrated Substance Abuse Programs, Pacific Southwest Addiction Technology Transfer Center, California Department of Alcohol and Drug Programs, and Substance Abuse and Mental Health Services Administration

A series of half-day or full-day training sessions were held throughout California (with funding provided by the California Department of Alcohol and Drug Programs) to enhance clinician skills to conduct screening, brief intervention, and referral to treatment (SBIRT) for alcohol and other drug problems with patients in trauma centers, emergency departments, and primary health care settings. The goal of this training series is to teach providers how to screen their patients for alcohol and other drug problems using effective and validated strategies and develop skills for conducting a brief intervention for those who screen positive. Brief intervention can also help those in need of treatment for addictive disorders to understand the need for and accept a referral for addiction treatment.

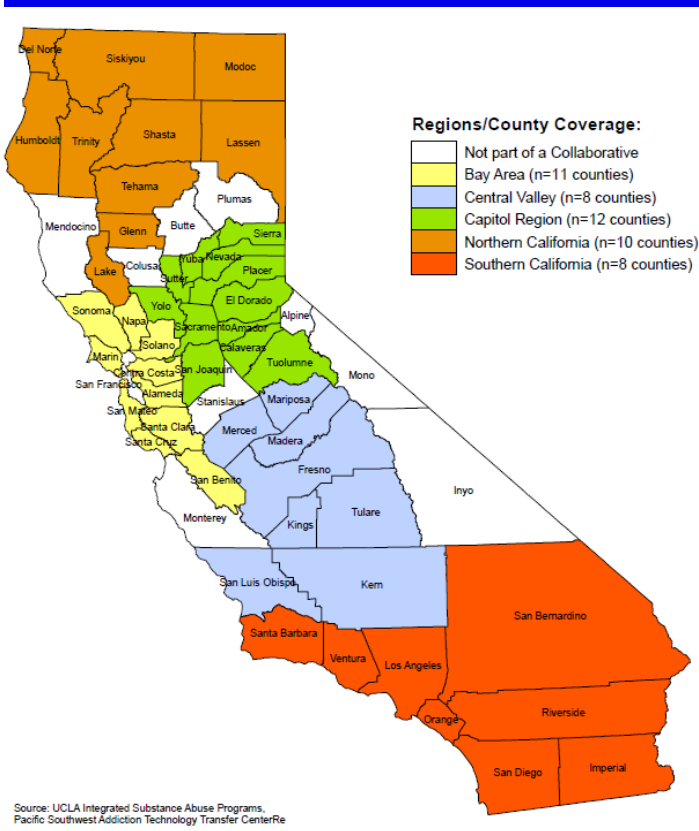
A total of 533 individuals have been trained to date. Three more trauma SBIRT trainings will be conducted prior to the end of March 2010 in Sacramento County (March 29), Orange County (March 4), and one more county to be determined..



ADOPTING CHANGES TO IMPROVE OUTCOMES NOW
 Making an Impact on Addiction Treatment and Recovery

California Regional NIATx/ACTION Campaign Learning Collaborative Project

Sponsors: Pacific Southwest Addiction Technology Transfer Center, County Alcohol and Drug Program Administrators' Association of California, and NIATx National Program Office . **Funded by:** California Endowment



Project Outcomes: Five multi-county NIATx/ACTION Campaign Learning Collaboratives were established in California as part of the yearlong *Adopting Changes in Addiction Treatment* project. Aggregate project findings are as follows: 89% average reduction in wait-time (2 agencies reporting); 64% average improvement in timely admissions (4 agencies reporting); 51% average reduction in no-shows (15 agencies reporting); 9% average improvement in overall length of stay (1 agency reporting); 11% average improvement in 30-day continuation (2 agencies reporting); and 66% average reduction in early discharges (2 agencies reporting). Another positive outcome of the project was the business case for process improvement. The results of a recent online evaluation survey showed 67 percent of the respondents reported improved services and increased agency revenue by making the changes the ACTION Campaign recommends. Many of the agencies focused on client engagement and tested promising practices such as reminder calls. With increased admissions leading to increased billing, these agencies were able to save money and continue to improve customer services, even in the midst of California's budget crisis.

While the project officially ended on October 31, 2009, the regional collaboratives remain an active component of the NIATx ACTION Campaign II. Beginning in January 2010, the Pacific Southwest ATTC will offer two monthly learning collaborative interest calls for individuals wishing to report on their progress and receive coaching support. For more information, please contact Beth Rutkowski at brutkowski@mednet.ucla.edu.

Web-Based Learning Opportunities on Using Motivational Incentives

Learn about using motivational incentives (a.k.a., contingency management), a powerful, science-based practice, to help clients achieve and maintain their treatment goals. All are welcome to participate in these Webinars, which are being conducted as part of the fall 2009 CATES training series on prescription



drug misuse. The webinar will occur on **February 4, 2010** (10-11am PST) and will repeat on **February 10, 2010** (1-2pm PST). Two ways to join: Call in to listen or login to listen and see the presentation. Don't miss this learning opportunity. For more info, contact Beth Rutkowski at brutkowski@mednet.ucla.edu.

Pacific Southwest ATTC Staff

Thomas E. Freese, Ph.D.
 Principal Investigator/Director

Beth Rutkowski, MPH
 Associate Director of Training

Sherry Larkins, Ph.D.
 Program Director

Alex Olson, BA
 Training Coordinator

Grant Hovik, BA
 Training Assistant

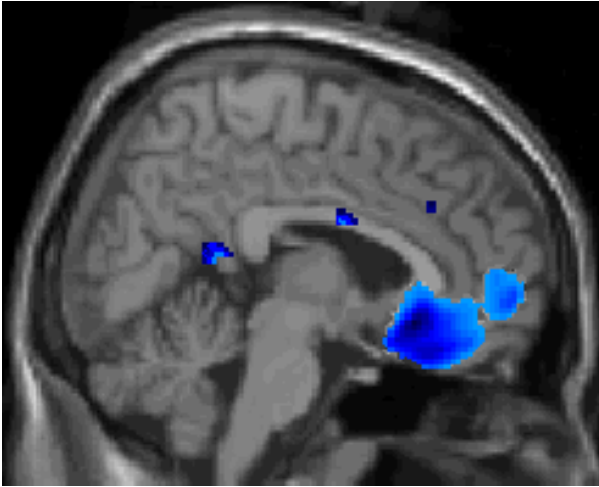
For more information go to:

www.psattc.org or **310-267-5408**

EnCAL Activities

Methamphetamine Treatment Strategies in Integrated Mental Health and Primary Care Services

January 15, 2010, San Francisco, CA . Sponsor: SF Department of Public Health

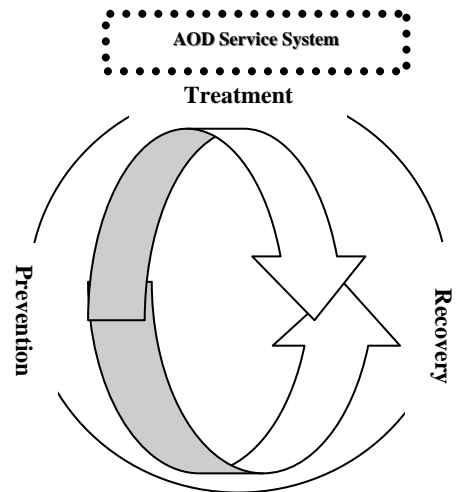


Drs. Richard Rawson and Suzette Glasner Edwards presented a full-day training to 400-600 providers on methamphetamine's effects on the brain and body, emphasizing psychiatric comorbidity in methamphetamine-dependent patients. In addition to the basic effects of methamphetamine and common methamphetamine dependence-psychiatric comorbidities, participants gained an understanding of evidence-based treatment for this population and practices to promote engagement and retention. Case study examples were discussed to emphasize proven treatment strategies for optimizing outcomes for recovery among the comorbid population. Using lessons from the NIATx initiative, strategies to promote long-term recovery were presented, as well as evidence-based practices to promote engagement and retention using contingency management and motivational interviewing.

The Continuum of Services System Re-engineering (COSSR) Model

March 3, 2010, Fresno CA. , Sponsor: Fresno County Department of Alcohol and Drug Programs

A training will be conducted by Dr. Richard Rawson and Ms. Valerie Pearce for Fresno County AOD staff, providers, clinicians, and administrators with information on the continuum of care model, how data can inform us about clients' movement through a system of care, and useful strategies on how to increase the number of clients moving across the system of care. In addition, participants will learn about how substance abuse treatment can be more effective through an integrated and comprehensive set of services rather than an acute illness-based, fragmented system. The goal of the presentation is to facilitate the movement of Fresno County's AOD system toward a continuum of services (COS). This effort is incorporated into the Fresno County EnCAL Pilot project, with a specific focus on the improvement of transfer rates between their residential and outpatient services.



Using Motivational Data as a Performance Measure to Enhance Treatment and Improve Retention, Spring 2010, Orange, CA, Orange County Alcohol and Drug Abuse Services

UCLA and Orange County ADAS will conduct a training for treatment staff of a selected provider on (1) the meaning of Client Evaluation of Self and Treatment (CEST) data, (2) the relationship between CEST motivation scores and retention, and (3) on possible uses of CEST scores as a performance measure and as a way to enhance treatment. The CEST scale is an instrument developed by Texas Christian University (TCU) that captures several crucial psychosocial and readiness dimensions of change and recovery. The Orange County providers are assessing their clients using the CEST with an emphasis on the motivation scales. This effort is incorporated into the Orange County EnCAL Pilot project, focusing on motivation data and performance measurement

Promoting Awareness of Motivational Incentives (PAMI) Introductory Training

February 4, 2010, Ventura, CA. Sponsor: Ventura County Department of Alcohol and Drug Programs

Dr. Richard Rawson and Ms. Valerie Pearce will conduct an introductory training on the 'Promoting Awareness of Motivational Incentives' (PAMI) Model. This training provides a conceptual overview of how this model increases engagement and retention among alcohol and drug using clients. Background on the model and demonstrated effectiveness of the use of motivational incentives will be provided. Next steps in which to plan for implement of the PAMI within their AOD programs will be discussed. These steps include: identification of the target behavior, the choice of the target population and reinforcer, the identification of the magnitude and frequency of the incentive, and the decision on the timing and the duration of the incentive. Challenges and feedback from administrators, staff, and patients who experienced using the PAMI will be incorporated. A follow-up training will be scheduled with all relevant program staff prior to full implementation. This model has been selected by Ventura County as part of the EnCAL pilot project to improve the transfer rate between detox and recovery services. Transfer rates are an important performance measure within the continuum of services (COS) framework.



Treatment Quality Enhancers

Learning webinars are in development to provide specific training and technical assistance to enhance skills and capabilities around data management and reporting. Emphasis will be on enabling more efficient performance and outcome data understanding towards improvement initiatives. Webinars will be created for ADP, county, and program staff to participate with live presenters using interactive web-based technology or via an asynchronous mechanism at the learner's convenience. Webinars currently in development include: CalOMS-Tx Data Collection Training and Certification, and Chronic Care Model and Continuity of Care.



Dual Diagnosis Capability in Mental Health Treatment (DDCMHT) , Spring 2010, Lassen, CA.

Sponsor: Lassen County Health and Social Services

Workshop Description: A multiple-day training for select Lassen County administrative staff to learn the implementation process of the Dual Diagnosis Capability in Mental Health Treatment (DDCMHT) assessment. The DDCMHT is an organizational assessment that can be conducted to assess the capability of providing alcohol and drug services within a mental health setting. Measurable domains include: program structure, program milieu, clinical process: assessment, clinical process: treatment, continuity of care, staffing, and training. Within this process to improve continuity of care for addiction treatment, service and system integration have surfaced as a growing need among counties, specifically between AOD and MH departments. Using data to enhance service linkages and cross-discipline coordination is imperative in order to determine capacity, and identify benchmarks and change strategies. This effort is incorporated into the Lassen County EnCAL Pilot project, focusing on service integration and coordination.



The EnCAL Staff

Richard Rawson, Ph.D., RRawson@mednet.ucla.edu

Rachel Gonzales, PhD, Rachelmg@ucla.edu

Darren Urada, PhD, durada@ucla.edu

Allison Ober, MSW, PhD, ajober@ucla.edu

Desirée Crèvecoeur-MacPhail, PhD, desireec@ucla.edu

Valerie Pearce, MPH, Vpearce@mednet.ucla.edu

Jia Fan, MS, fanjia00@ucla.edu

Joy Yang, MPP, joyinla@ucla.edu

Sarah Cousins, BS, BA, sarahjcousins@ucla.edu

Stella Lee, BA, stellamlee@ucla.edu

**For more information about EnCAL
information contact: 310-267-5413**

Upcoming Training Events

Additional events will be added. See full calendar at www.psattc.org

January 2010

Sun	Mon	Tues	Wed	Thurs	Fri	Sat
					1	2
3	4	5	6	7	8	9
10	11	12	13	14	15 Meth Treatment in Mental Health/Pri- mary Care Settings — San Francisco (EnCAL)	16
17	18	19	20	21	22	23
24/31	25	26	27	28	29 Community College SBIRT Webinar (PSATTC)	30

For information on all Pacific Southwest ATTC events go to www.psattc.org or call 310-267-5408.

For information on all EnCAL events call 310-267-5306.

February 2010

Sun	Mon	Tues	Wed	Thurs	Fri	Sat
	1	2	3	4 Motivational Incentives Webinar (PSATTC) PAMI Training— Ventura (EnCAL)	5 ADPA Quarterly Lecture Series (PSATTC) The Science of Relapse and Recovery (PSATTC)	6
7	8	9	10 Motivational Incentives (PAMI) Webinar (PSATTC)	11	12	13
14	15	16	17 CATES: PTSD, SA, and Returning Military — Downy (PSATTC)	18	19 CATES: PTSD, SA, and Returning Military — Santa Ana (PSATTC)	20
21/28	22	23	24 2010 CADA Public Policy Conference— Sacramento (PSATTC)	25 DMH SBIRT Training for FSP Children's Providers—LA (PSATTC)	26	27 Faith-Based Training Series #2,—LA (PSATTC)

Upcoming Training Events

Additional events will be added. See full calendar at www.psattc.org

March 2010

Sun	Mon	Tues	Wed	Thurs	Fri	Sat
	1	2	3	4 Trauma Ctr SBIRT — Orange (PSATTC)	5	6 Community College SBIRT— Sacramento (PSATTC)
7	8	9	10	11	12	13
14	15	16	17	18	19	20
21	22 Treatment Planning MATRS (PATTTC)	23	24	25	26	27 Faith-Based Training Series #3—LA (PSATTC)
28	29 Trauma Ctr SBIRT — Sacramento (PSATTC)	30	31 The Women's Symposium: Breaking Barriers —LA (PSATTC)			

For information on all **Pacific Southwest ATTC** events go to www.psattc.org or call 310-267-5408.

For information on all **EnCAL** events call 310-267-5306

April 2010

Sun	Mon	Tues	Wed	Thurs	Fri	Sat
				1	2	3
4	5	6	7	8 LI Graduation (PSATTC)	9	10
11	12	13	14	15	16	17
18	19	20	21	22	23	24
25	26	27 CATES: PTSD, SA, and Returning Military — Yuba City (PSATTC)	28	29 CATES: PTSD, SA, and Returning Military — San Jose (PSATTC)	30	