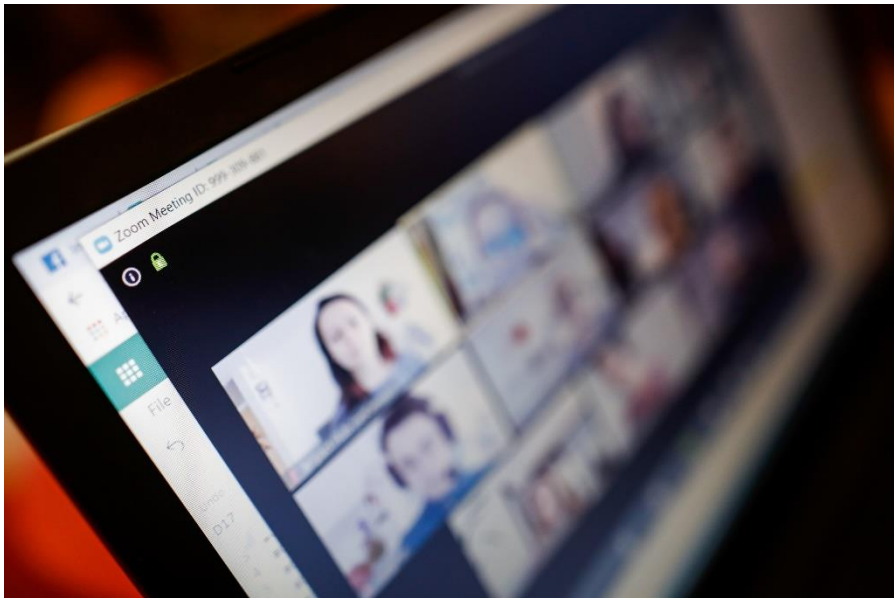




Incorporating Overdose Prevention Vending Machines on Tribal Lands

Tuesday, August 20, 2024

Notice: AI Features in Trainings



- Per University of California policy, the use of artificial intelligence (AI) features, such as meeting summaries, are not allowed in virtual meetings and webinars.
- Attendees who enable AI features will be asked to turn them off or they may be removed from the training.
- Thank you for your understanding as we navigate this new frontier!

Indigenous Land Acknowledgement

- We respectfully acknowledge that we live and work in territories where Indigenous nations and Tribal groups are traditional stewards of the land.
- Please join us in supporting efforts to affirm Tribal sovereignty across what is now known as California and in displaying respect, honor and gratitude for all Indigenous people.


Whose land are you on?

Option 1: Text your zip code to 1-855-917-5263

Option 2: Enter your location at <https://native-land.ca>

Option 3: Access Native Land website via QR Code:





What we say and how we say it inspires the hope and belief that recovery is possible for everyone.

Affirming, respectful, and culturally-informed language promotes evidence-based care.

PEOPLE FIRST

Language Matters

in treatment, in conversation, in connection.



Addiction Technology Transfer Center Network
Funded by Substance Abuse and Mental Health Services Administration

National Immunization Awareness Month

#Ivax2Protect



National Immunization Awareness Month (NIAM) is an annual observance held in August to highlight the importance of vaccination for people of all ages. Together, we can help raise awareness about the importance of vaccination and encourage people to talk to a healthcare provider they trust about staying up to date on their vaccinations.



National Immunization Awareness Month

August 9th - International Day of the World's Indigenous Peoples



United Nations

Department of
Economic and
Social Affairs

9 AUGUST

INTERNATIONAL DAY
OF THE WORLD'S
**INDIGENOUS
PEOPLES**

#WeAreIndigenous

Protecting the Rights of Indigenous Peoples in Voluntary Isolation and Initial Contact

Friday 9 August 2024



Alicia Cahuiya, Waorani. Photo: Manuel Elias

August 26 - National Dog Day



INCORPORATING OVERDOSE PREVENTION VENDING MACHINES ON TRIBAL LANDS

*Harm Reduction
Coalition of San Diego*



SD OEND

**SAN DIEGO OVERDOSE EDUCATION AND
NALOXONE DISTRIBUTION PROJECT**





Disclosures

FACULTY DISCLOSURE

None of the presenters, planners, or others in control of content for this educational activity have relevant financial relationships to disclose with ineligible companies whose primary business is producing, marketing, selling, re-selling, or distributing healthcare products used by or on patients, except:

<i>Katya Adachi Serrano</i>	<i>CEO of Serrano Natural Health</i>
---------------------------------	--------------------------------------

All other relevant financial relationships have been mitigated by conducting a peer review of the content used for this session.

OVERVIEW

WHAT IS HARM REDUCTION?

- Harm reduction is a set of practical strategies and ideas aimed at reducing negative consequences associated with drug use. Harm Reduction is also a movement for social justice built on a belief in, and respect for, the rights of people who use drugs.

-National Harm Reduction Coalition

- Harm reduction can be applied to any behaviors that have an impact on individual and community risk.

CORE PRINCIPLES

- WHOLE-PERSON CARE
- ACCESSIBILITY
- PARTICIPANT SELF-DETERMINATION
- PARTICIPANT INVOLVEMENT
- COMMITMENT TO EVIDENCE
- SOCIAL JUSTICE
- PRACTICAL AND REALISTIC

TRAINING OBJECTIVES

By the end of this training, you'll be able to:

Discuss

- The need for naloxone distribution on our tribal lands



Understand

- Strategies used to incorporate vending programs into communities

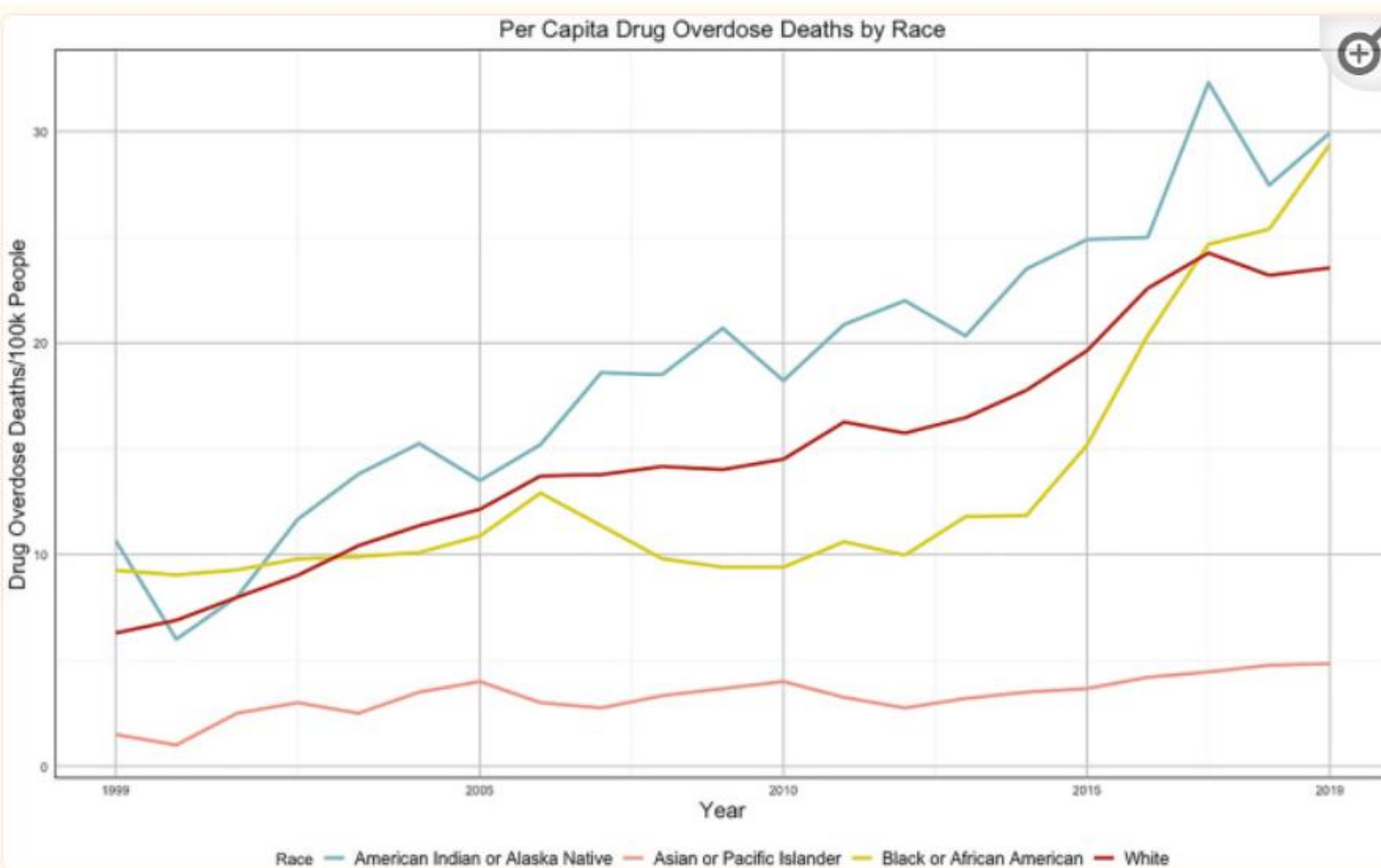


Share

- Current ODPVMs we use in our program and why

WHY NALOXONE DISTRIBUTION IS NEEDED ON TRIBAL LANDS

NATIVE POPULATIONS IN THE UNITED STATES



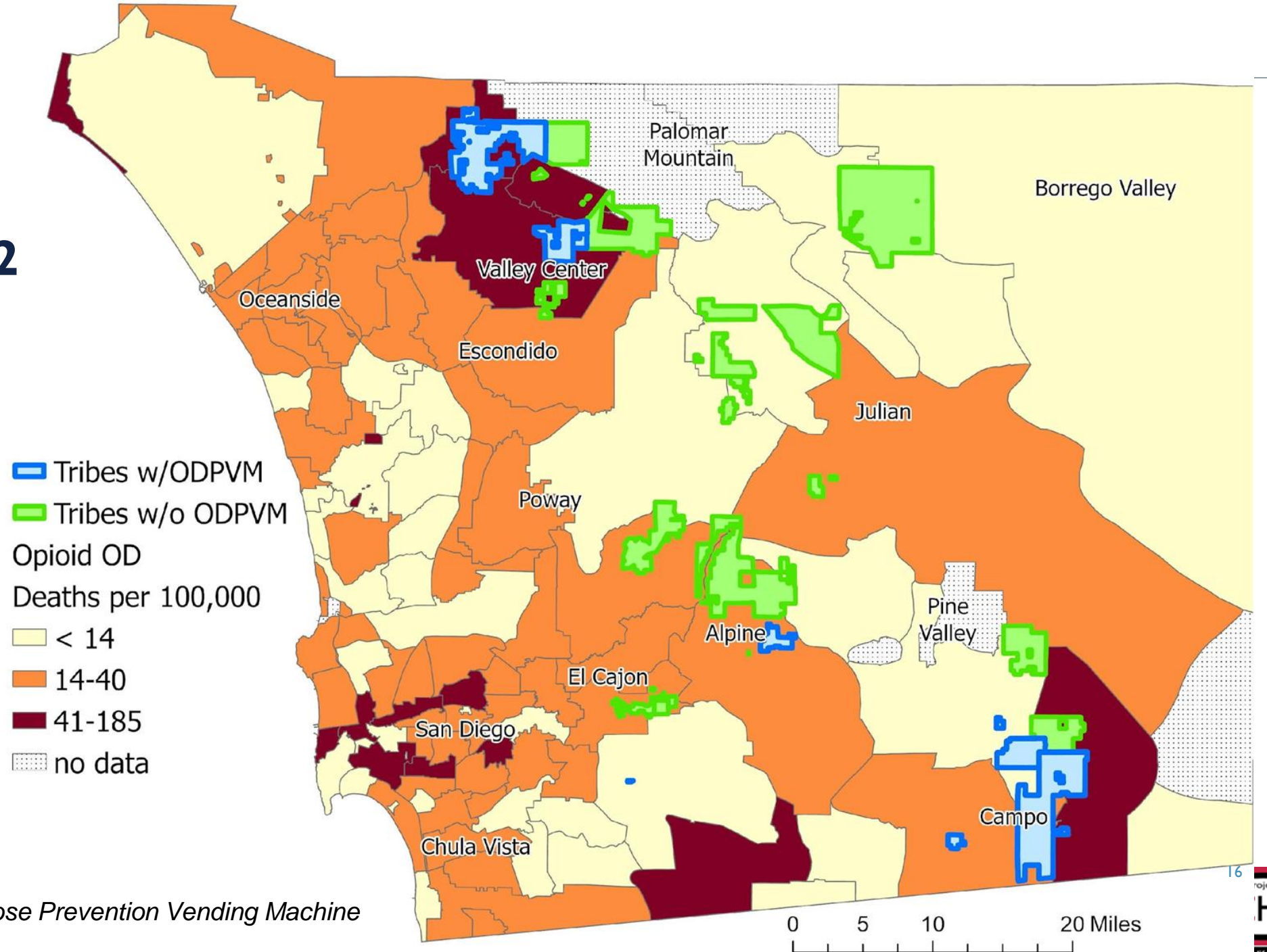
■ AI/AN had the highest rates of suicide and substance use disorder of any minority group and rates have been increasing since 2003 (CDC, 2022)

■ CDC shows that AI/AN had the highest overdose rates out of all demographics for 2019 and 2020.

■ Additionally, from 2004-2019, death rates for overdoses involving psychostimulants were generally higher among AI/AN persons than among other racial and ethnic groups (CDC, 2022)

■ The disproportionate increase for AI/AN persons may partly be due to health inequities, like unequal access to substance use treatment and treatment biases.

San Diego County Overdose Deaths in 2022 by Census Tracts and Tribes



*ODPVM = Overdose Prevention Vending Machine

OUR APPROACH TO WORKING WITH TRIBES

STRATEGIES WE USED

- Approached with respect and honor
- Recognized each Tribe as an individual sovereign nation
- Maintained willingness to meet each Tribe's needs
- Placed ourselves as a community organization in between the Tribe and Govt. Funding Source
- Met with each Tribal Council, Tribal Chair, and any wellness committees or clinics
- Created memorandum of understanding (MOUs) and reviewed with each of the Tribe's legal departments
- Determined a safe stigma free placement for each machine



STRATEGIES CONT.

“ It’s really empowering, to be able to heal with your own people. ”

–Stevi Rae



- Provided cultural sensitivity training to all working on our program including the funding source representatives and press
- Made it known that we had no desire to run a program for the Tribe, but rather to empower them and their people to create their own programs through trainings and support

THE BENEFITS OF OVERDOSE PREVENTION VENDING MACHINES

TOP REASONS FOR USE



- 24-hour access to Naloxone and other harm reduction supplies such as fentanyl test strips
- Low barrier registration process
- Training can be incorporated into the registration process
- Anonymous or Pseudo-Known process
- Creates a known community resource
- Reduces staff needed to distribute
- Can collect data imperative to see results without data entry needed
- Two thirds of machine usage occurs outside the window of 8am and 5pm
- Permissions can be set to limit program resources

TRAINING, EDUCATION AND
OUTREACH ARE A MUST

A VENDING MACHINE IS A TOOL NOT A SOLUTION

- Education, training and outreach are a must
- Utilize community elders or leaders to build trust
- Remove the stigma around harm reduction and naloxone within your communities
- Work with the willing
- Meet people where they are at



Tribal Chairman



THINGS TO CONSIDER BEFORE BEGINNING AN OVERDOSE PREVENTION VENDING PROGRAM

CONSIDER THIS...

- What is your budget
- What resources or staff do you have
- Where is your product coming from (Grant/State Free Naloxone Programs/Other Source we can help)
- How do you keep it restocked
- Who is going to educate and what trainings will you offer (culturally sensitive trainings available)
- Are there community organizations in your area that are willing to do trainings for free
- Have you partnered with them
- Who can you use to be community leaders
- How do you show/prove your impact (Data)
- What will your program look like in 3-5 years
- Will you offer other products eventually
- What will you do with the machine after



HOW TO DEAL WITH PRESS AND MEDIA RELATIONS

PRESS AND MEDIA HOW TOS

- Not all press is good press
- Know who you'd like to work with beforehand
- Reach out to Tribal media relations for help with press releases
- Stick to the positive changes you are working towards in your communities
- Avoid conversations regarding any casino patrons...unless your distribution program serves them as well



MACHINE OPTIONS AND FUNCTIONS

SMART VS BASIC



Smart Machines:

- One time cost & monthly lease
- 49" touchscreen
- Removes registration barriers
- Plays educational videos, hosts images, etc.
- Resources & Referral List & Map
- Telehealth-Capable
- Ongoing support
- Automatic reporting



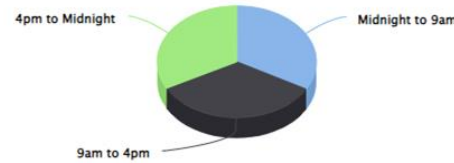
Basic Machines:

- Owned, not leased
- Hidden costs of liability, data collection & maintenance
- Users must register through website for 9 digit pin code
- One dispense per code entry
- Data & reporting is done by subcontractor

DATA COLLECTION ON SMART MACHINE

- Consent and Eligibility Text
- 3 Step Anonymous Registration
- Choose Birth Year
- Choose a Color
- Choose an Avatar
- Survey for non-identifying demographic data
- Integrating with palm vein scanners is on our roadmap as well

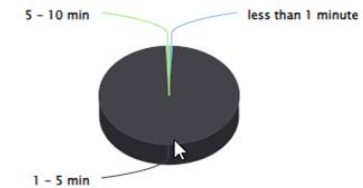
of sessions by time of day past 30 days (Time Zone: America/Vancouver)



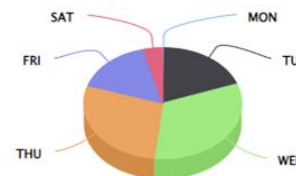
Time of Day	# of Sessions
Midnight to 9am	204
9am to 4pm	209
4pm to Midnight	202

of sessions by duration in minutes past 30 days

Session Durations	# of Sessions
less than 1 minute	6
1 - 5 min	605
5 - 10 min	4



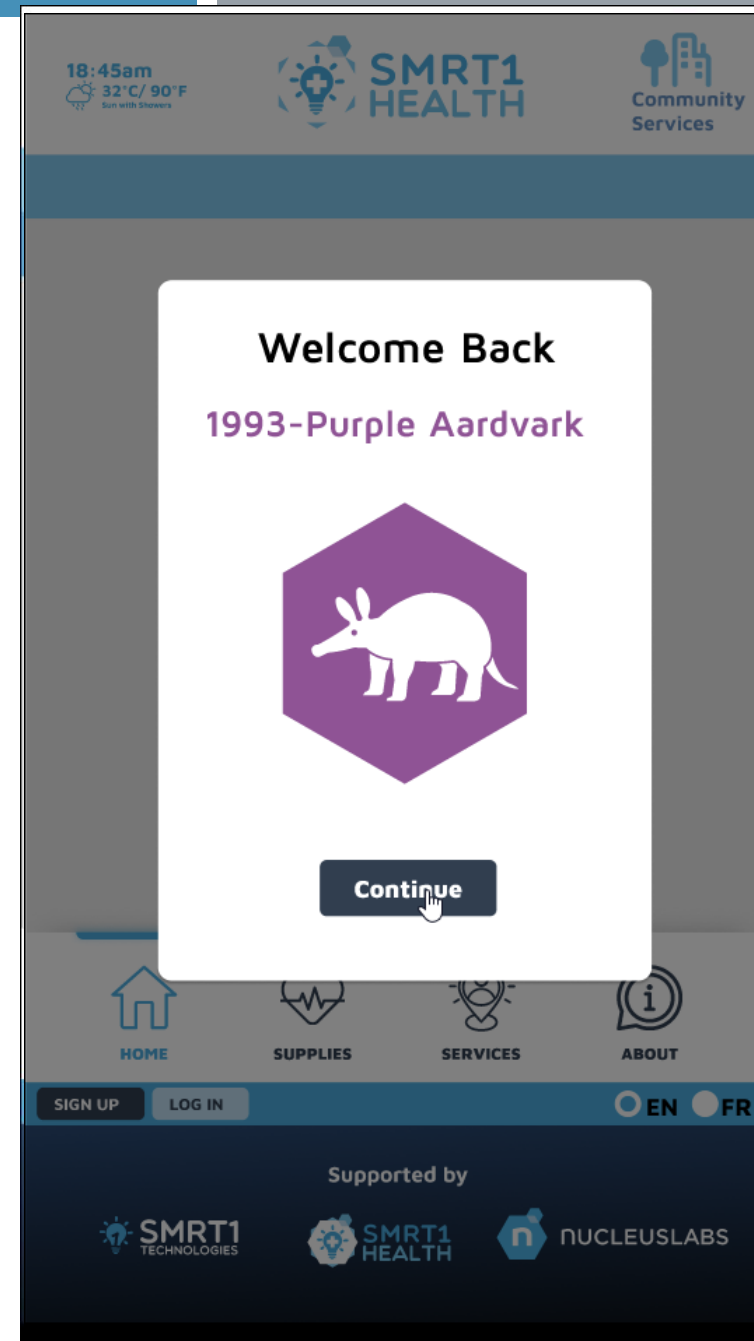
of sessions by day of week past 30 days



Day of Week	# of Sessions
MON	2
TUE	117
WED	199
THU	175
FRI	98

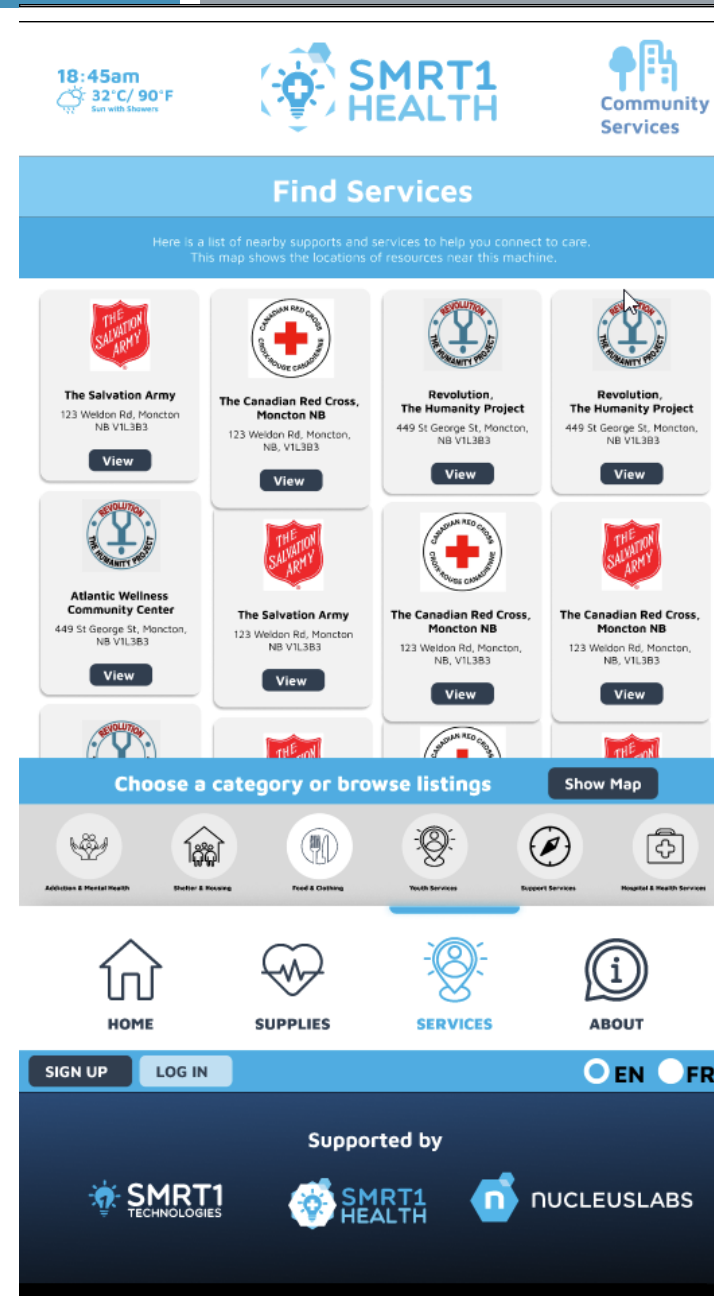
SUPPLIES

- Supplies can also be dispensed without barrier in anonymous mode
- Each machine can have a mix of low barrier and no barrier supplies with configurable limits
- People who are registered can have access to more supplies
- Supplies can be limited to pseudo-known individuals
- Each supply is configurable and can have timed and visit limits



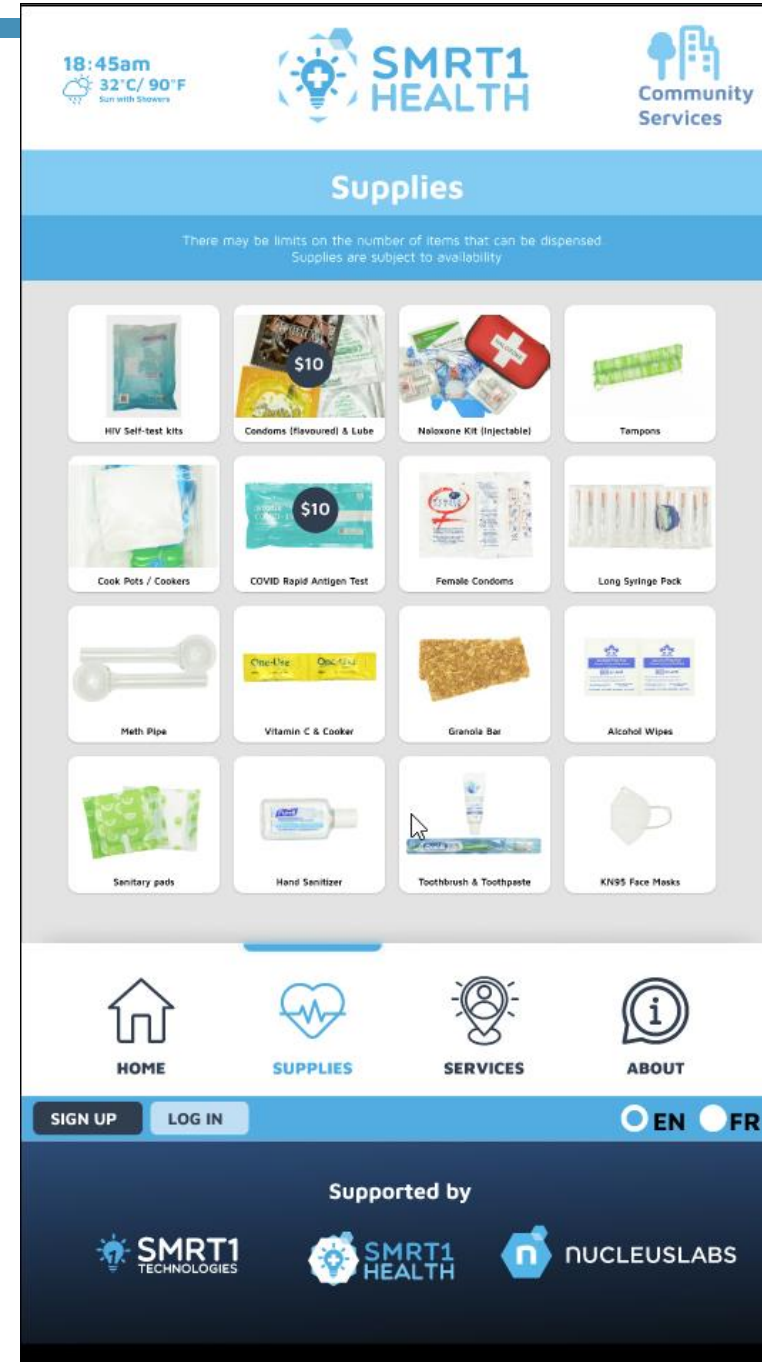
REFERRALS

- Help people find local service providers and connections to care and assistance
- Machines provide mapping and contact info so people can find and contact service providers directly
- Refer people to community service providers with QR codes



QUESTIONNAIRES

- Registered people can be presented with regular or one-time questionnaires to determine the efficacy of the program or other key data points
- Questionnaires can also be assigned to supplies to get more information about how they are being used and how helpful they are before they are dispensed



HOW WE ARE HELPING OTHERS AND HOW CAN WE HELP YOU

THERE IS NO COMPETITION IN HARM REDUCTION

- We offer consulting services to help others start their programs and guide them through some of the difficulties that we experienced
- We do not charge, rather we ask that you please consider sharing your non-identifying data so we can help others
- Help others help themselves



SD OEND

SAN DIEGO OVERDOSE EDUCATION AND
NALOXONE DISTRIBUTION PROJECT



*Harm Reduction
Coalition of San Diego*



Amy Knox

Chief Operating Officer - HRCSD



REFERENCES & SOURCES

- Whelshula M, Hill M, Galaitsi SE, Trump B, Mahoney E, Mersky A, Poinatte-Jones K, Linkov I. Native populations and the opioid crisis: forging a path to recovery. Environ Syst Decis. 2021;41(3):334-340. doi: 10.1007/s10669-021-09813-3. Epub 2021 Apr 21. PMID: 33898160; PMCID: PMC8058143.
- NIDA. 2022, January 11. Naloxone DrugFacts. Retrieved from <https://nida.nih.gov/publications/drugfacts/naloxone> on 2024, March 28
- Allen, C. (2023) IHS Supports Tribal Communities in Addressing the Fentanyl Crisis. <https://www.ihs.gov/newsroom/ihs-blog/may-2023-blogs/ihs-supports-tribal-communities-in-addressing-the-fentanyl-crisis/#:~:text=In%202022%2C%20the%20CDC%20reported,56.6%20deaths%20per%20100%2C000%20persons.>
- Centers for Disease Control and Prevention (Dec 2022) Drug Overdose Prevention in Tribal Communities. <https://www.cdc.gov/drugoverdose/health-equity/tribal.html>
- Indian Health Services “Behavioral Health” 2023. <https://www.ihs.gov/newsroom/factsheets/behavioralhealth/>
- California Overdose Surveillance Dashboard. Prepared by California Department of Public Health (CDPH - Substance and Addiction Prevention Branch (SAPB). Accessed on 03/28/24. <https://skylab.cdph.ca.gov/ODdash/>

Questions and Discussion



Tribal MAT ECHO Clinic
— WELLNESS WHEEL —



TRIMAT-2-11



Date: / / Presenter: / Tribal Affiliation:
FIRST LAST CHECK HERE IF NONE:

Patient Pseudonym: Gender: Age: Tribal Affiliation:
CHECK HERE IF NONE:

ECHO ID: Check if follow-up to a previously presented case

Clinical Question:

<p>COMMUNITY Psychosocial support, family resources, network of care</p> <input type="text"/>	<p>SPIRIT Indigenous, cultural, spiritual, religious practices</p> <input type="text"/>
--	--



<p>BODY Physical health, medications</p> <input type="text"/>	<p>MIND Mental and emotional health, substance use</p> <input type="text"/>
--	--

Care plan:



Self-Paced Learning Opportunities

Stigma

Courses for clinicians interested in addressing stigma related to addiction
Claim up to four (4.0) credit hours of CE/CME

- **Dismantling Stigma: Addiction, Treatment, and Policy** (1.0 credit hour)
- **Stigma in Healthcare** (1.0 credit hour)
- **Social Determinants of Health and Cultural Competency in Substance Use Treatment** (1.0 credit hour)
- **Understanding the Impact of Structural Racism on Clinical Care: Lessons from HIV and COVID-19** (1.0 credit hour)



Scan the code
or visit
<https://bit.ly/StigmaSUD>

<https://psattcelearn.org/>



Accredited
Courses



Individualized
Learning Plan



Qualifies for
MATE Act DEA
Requirement





David Geffen School of Medicine

Integrated Substance Abuse Programs



Follow Us on Social Media

